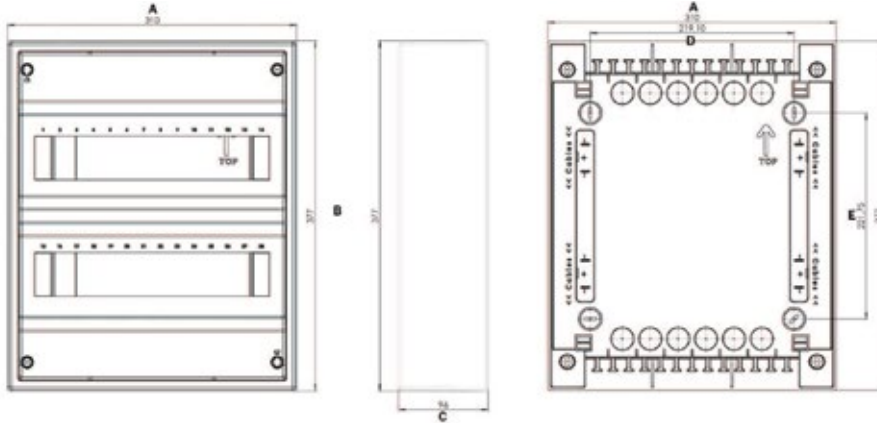


	A [mm]	B [mm]	C [mm]	D [mm]	E [mm]	Max. allowed power losses when Max. number of devices are installed
ACT48	310	650	96	219	472	60W



ETIBOX Accessories

Input Terminals EFB

EFB - 25 - F T - 15

- 1
- 2
- 3
- 4

1 - busbar cross-section (mm²): 25, 50.
 2 - connection type:
 F - fork type,
 P - PIN type.
 3 - cable entry:
 T - top; S - side
 4 - output length
 15...29mm



EFB-25FT-15



EFB-25FS-15



EFB-25PT-15



EFB-25PS-15



EFB-25FT-28



EFB-25FS-28



EFB-25PT-29



EFB-25PS-29

Feeding terminals EFB-25 (80A, AC 690/DC 1500V)

Type	Code No.	Cross-section [mm ²]	Type	Length [mm]	Entering	g	Box
EFB-25FT-15	002921280	6-25 mm ²	Fork	15	top	11	25
EFB-25FS-15	002921282		Fork	15	side	11	25
EFB-25PT-15	002921283		Pin	15	top	11	25
EFB-25PS-15	002921285		Pin	15	side	11	25
EFB-25FT-28	002921286		Fork	28	top	13	25
EFB-25FS-28	002921287		Fork	28	side	13	25
EFB-25PT-29	002921288		Pin	29	top	13	25
EFB-25PS-29	002921289		Pin	29	side	13	25

Feeding terminals EFB-50 (125A, AC 690/DC 1500V)

Type	Code No.	Cross-section [mm ²]	Type	Length [mm]	Entering	g	Box
EFB-50FT-15	002921281	6-50 mm ²	Fork	15	top	20	25
EFB-50PT-15	002921284		Pin	15	top	20	25

Input terminal for insulated conductor rails EFB-50 (160A, AC/DC 1000V)

Type	Code No.	Cross-section [mm ²]	Compatibility	Length [mm]	g	Box
EFB-50	002921278	6-50 mm ²	IZ (IZS) 17,8 mm	50	29	10



EFB-50FT-15



EFB-50PT-15

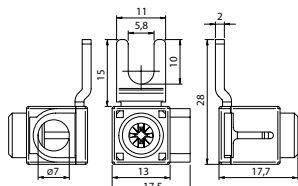


EFB50

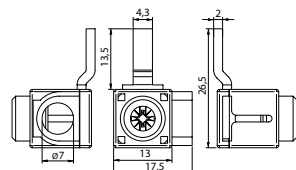


3xEFB50

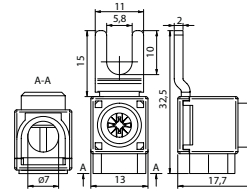
Dimensions



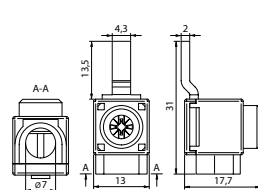
EFB-25FS-15



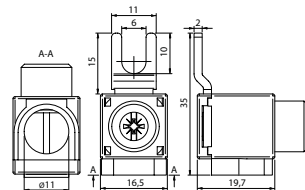
EFB-25PS-15



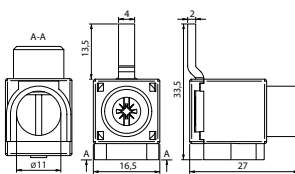
EFB-25FT-15



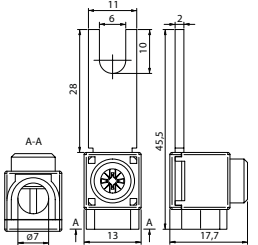
EFB-25PT-15



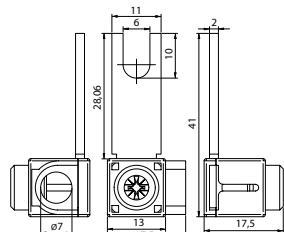
EFB-50FT-15



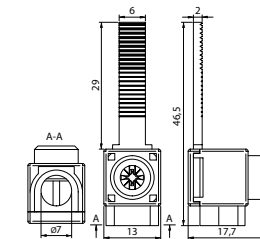
EFB-50PT-15



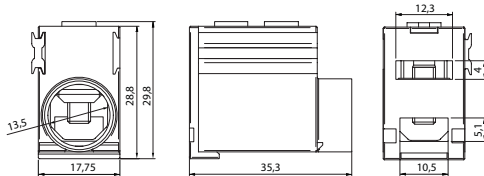
EFB-25FT-28



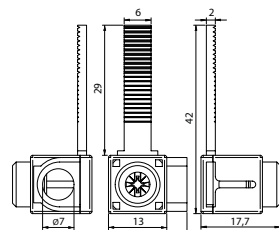
EFB-25FS-28



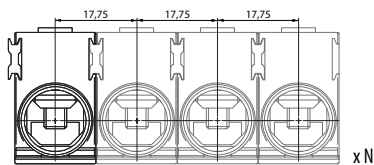
EFB-25PT-29



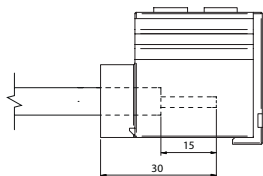
EFB-50



EFB-25PS-29



EFB-50



PZ2