

# ETIBUSBAR

Supports and connections	734
NH fuse-switch disconnectors and fuse bases	739
D fuse-switch disconnectors and fuse bases	740
Device adapters	739
Technical data	743



## 60 MM BUSBAR SYSTEM



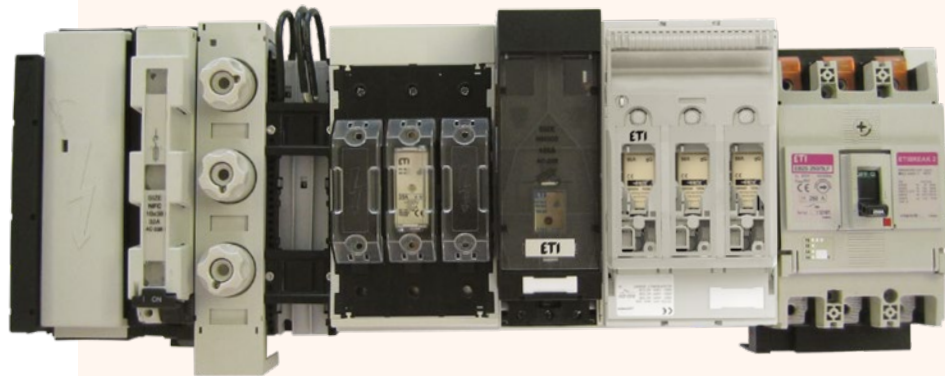
## 60 mm busbar system

### Description

With busbar system (Busbar) can be achieved faster assembly and connecting electrical components and higher density of electrical components per unit area. In this way saves time, which is required for assembly and also saving the space required for installation. The main feature of the busbar system is that all components are installed on the busbars, which provide solidness to the components while installing the components in place already provide junction inlet electrical connections. For complete wiring of electrical components is to be performed only wiring branches to consumers. Busbar system is simple in case of need for subsequent extension because the only condition is to extend the copper busbars. ETI's busbar system offers a wide range of items for direct mounting on busbar system, the offer also includes special adapters through which they can connect to other components, which shall be affixed to the mounting plate.

### Fields of use and features

Busbar systems are used wherever we want to achieve high visibility and compact inside electrical cabinets without undue additional wiring. Busbar system can be used in cases of alteration or extension of existing electrical cabinets because the more compact system saves space, or the only way to ensure enough. As a rule, the busbar systems are used in industrial environments, where the structure of electrical cabinets made by functional block and where it should be ensured high visibility electrical components for ease and speed of servicing in the event of failures and downtime.



### ETI 60mm busbar system offers:

- Short installation time
- Less wiring
- Standardized dimensions
- Easy to install
- Flexibility

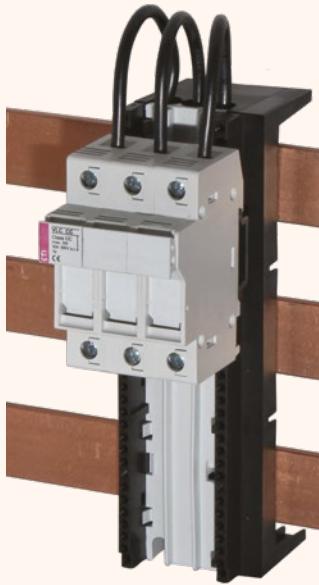
### Convincing advantages

- ⚡ Wide range of application
- ⚡ Small number of system components
- ⚡ No customized components demand
- ⚡ High flexibility
- ⚡ Innovative and sophisticated solutions
- ⚡ Easy to fit
- ⚡ According to standards IEC 60439-1, VDE 0660 part 500

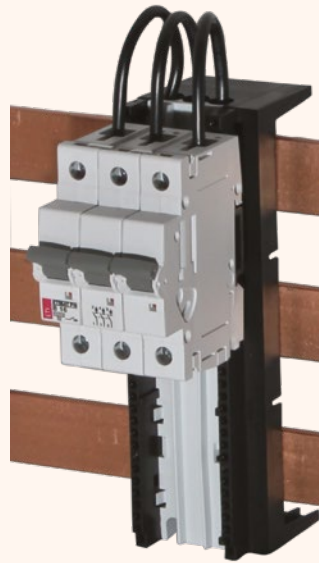
### Applications

- ⚡ Industry and energetics
- ⚡ Main and Sub-distribution boards
- ⚡ Cable and Wire protection
- ⚡ Motor protection

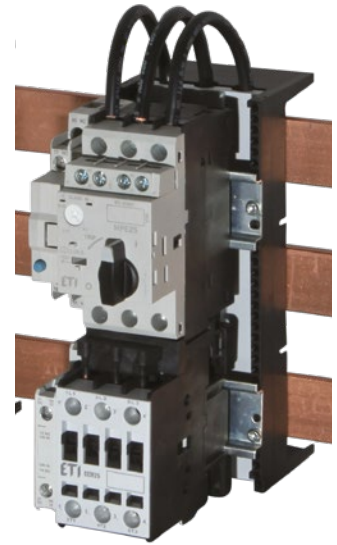
Examples:



1x DA-60/32/54/1  
1x VLC 10, 3-pole



1x DA-60/32/54/1  
1x ETIMAT P10, 32A



1x DA-60/32/72/2  
1x MPE 25 + UVT + ECCMPE25  
1x CEM 25 + BXCMLC

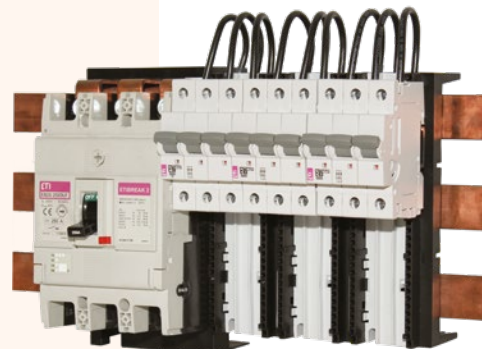
Example 1

Type	Code No.	Number of Components [pcs]
DVL-60/183	001696050	2
CHVL-60/183	001696152	2
DA-60/250/3/FE-5	001696162	1
EB2S 250/3LF 250A 3p	004671813	1



Example 2

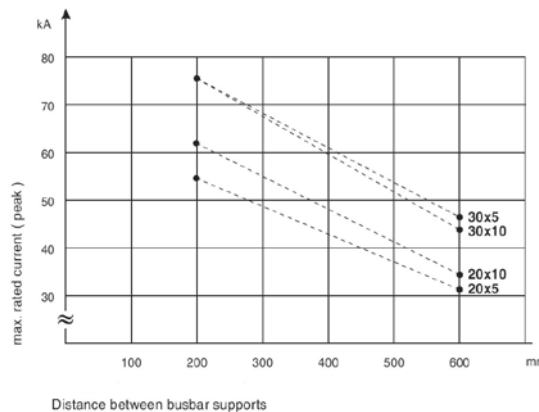
Type	Code No.	Number of Components [pcs]
DA-60/32/54/1	001696081	3
ETIMAT P10, C 32A, 3p	273231109	3
DA-60/250/3/FE-5	001696162	1
EB2S 250/3LF 250A 3p	004671813	1



**Supports and connections (60mm busbar)**

Type	Code No.	Description	Packaging [pcs]
BBS-60/1	001696000	1-pole busbar support for busbars 5-10mm and 20mm or 30mm width	10
BBS-60/3	001696001	3-pole busbar support for busbars 5-10mm and 20mm or 30mm width	10
BBS-60/4	001696002	4-pole busbar support for busbars 5-10mm and 20mm or 30mm width	10
BBS-60/3-A25	001696003	3-pole busbar support for busbars 5-10mm and 20mm or 30mm width with 25mm <sup>2</sup> terminals	5
BBS-60/3-A16	001696004	3-pole busbar support for busbars 5-10mm and 20mm or 30mm width with 16mm <sup>2</sup> terminals	5
H5-BBS	001696005	Insertion for busbar height compensation, 5mm	100
L-BBS-60/3	001696006	Lateral cover for busbar holder, 3p	10
L-BBS-60/4	001696007	Lateral cover for busbar holder, 4p	10
S-BBS-60/3	001696008	Side cover for busbar holder (BBS-60/3-A), 3p	10
BBC-60/3	001696009	Busbar cover (3-pole), covering range 27-50mm/piece	50
BBC-60/4	001696010	Busbar cover (4-pole), covering range 27-50mm/piece	50
BBC-1/20	001696011	Busbar cover (1-pole) for single busbar 5-10mm thick and 20mm wide, length 1m	20
BBC-1/30	001696012	Busbar cover (1-pole) for single busbar 5-10mm thick and 30mm wide, length 1m	20
CM-60/250/3	001696013	Connecting module 250A, 3-pole, terminal 1,5 - 70mm <sup>2</sup> connection	1
CM-60/250/4	001696014	Connecting module 250A, 4-pole, terminal 1,5 - 70mm <sup>2</sup> connection	1
CM-60/250/3/120-5	001696015	Connecting module 250A, 3-pole, terminal 16 - 120mm <sup>2</sup> connection using Cu cable or flat Cu busbar 5mm	1
CM-60/250/3/120-10	001696016	Connecting module 250A, 3-pole, terminal 16 - 120mm <sup>2</sup> connection using Cu cable or flat Cu busbar 10mm	1
CM-60/630/3	001696017	Connecting module 630A, 3-pole, terminal 70 - 300mm <sup>2</sup> connection	1
CM-60/630/F/3	001696018	Connecting module 630A, 3-pole, terminal clamping range 11x21mm using flat Cu busbar	1
CT-5/16	001696019	Conductor terminal with clamping range 1,5-16mm <sup>2</sup> for busbar thickness 5mm	50
CT-5/35	001696020	Conductor terminal with clamping range 1,5-35mm <sup>2</sup> for busbar thickness 5mm	15
CT-5/50	001696021	Conductor terminal with clamping range 1,5-50mm <sup>2</sup> for busbar thickness 5mm	15
CT-5/70	001696022	Conductor terminal with clamping range 16-70mm <sup>2</sup> for busbar thickness 5mm	15
CT-5/120	001696023	Conductor terminal with clamping range 16-120mm <sup>2</sup> for busbar thickness 5mm	15
CT-5/185	001696024	Conductor terminal with clamping range 16-185mm <sup>2</sup> for busbar thickness 5mm	15
CT-10/16	001696025	Conductor terminal with clamping range 1,5-16mm <sup>2</sup> for busbar thickness 10mm	50
CT-10/35	001696026	Conductor terminal with clamping range 1,5-35mm <sup>2</sup> for busbar thickness 10mm	15
CT-10/50	001696027	Conductor terminal with clamping range 1,5-50mm <sup>2</sup> for busbar thickness 10mm	15
CT-10/70	001696028	Conductor terminal with clamping range 16-70mm <sup>2</sup> for busbar thickness 10mm	15
CT-10/120	001696029	Conductor terminal with clamping range 16-120mm <sup>2</sup> for busbar thickness 10mm	15
CT-10/185	001696030	Conductor terminal with clamping range 16-185mm <sup>2</sup> for busbar thickness 10mm	15
PT-30/34x10	001696031	Plate terminal for busbars up to 30mm width, clamping range 34x34x10mm	3
PT-40/34x10	001696150	Plate terminal for busbars up to 40mm width, clamping range 34x34x10mm	3
PT-50/34x10	001696151	Plate terminal for busbars up to 50mm width, clamping range 34x34x10mm	3
BBCH-60/144	001696032	Universal cover of 3-pole busbars 5-10mm, covering width 144mm (ex. cover for conductor terminals type CT-...)	1
BBCH-60/84	001696033	Universal cover of 3-pole busbars 5-10mm, covering width 84mm (ex. cover for conductor terminals type CT-...)	1

BBS-60/... can be adjusted to 20m or 30mm busbar width and 5-10 mm thickness.



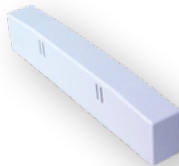
BBS-60/3



BBS-60/3-A25



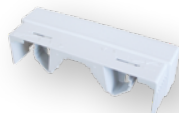
H5-BBS



L-BBS



S-BBS-60-3



BBC-60/3



BBC-1/30



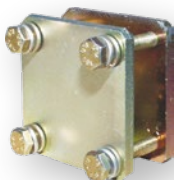
CM-60/250



CM-60/630



CT-5, 10/...



PT-30/34x10



BBCH-60/144



BC-20x5-30x10

## NV/NH horizontal fuse-switch disconnectors KVL for busbar mounting

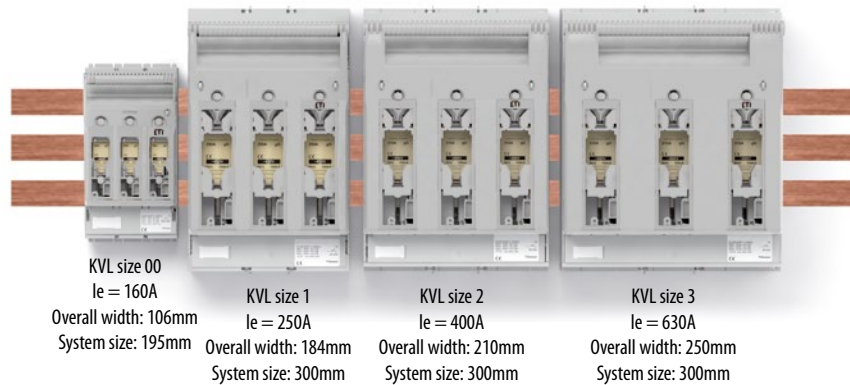
### Uniform cover cutout

KVL - horizontal fuse-switch disconnectors with different sizes can be combined together and form uniform cover cutout. The new assortment contains four cover support levels at 32, 60, 70 and 90 mm above the upper of busbar. KVL fuse-switch disconnectors can be mounted on busbars (for baseplates and DIN rails see chapter NV/NH).

- Available with 1- and 3-pole versions
- Four sizes: size 00, size 1, size 2, size 3
- Use with NV/NH Fuse-links 000, 00, 1, 2, 3

### Busbar mounting

KVL-00 to KVL-3 can be mounted onto 60mm busbar systems - no drilling required

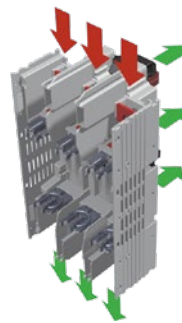


### Practical advantages



#### Uniform cover cutout for all sizes disconnectors

- Changeable installation depth by 4 different field supporting surfaces (32mm, 60mm, 70mm, 90mm)

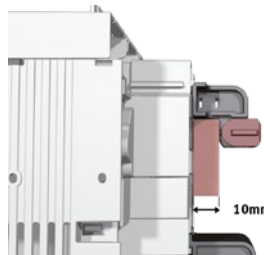


#### Area-saving

- integrated feeding terminal
- Busbar supply and safe outgoing cable outlet
- Busbar supports up to 20mm width, 19mm height max.

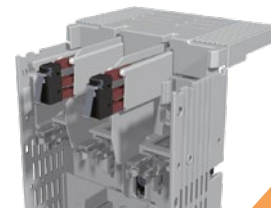
#### Easy adjustments

- adjustment to 5mm or 10mm thick bars
- simple modification of cable terminal from bottom side to top side

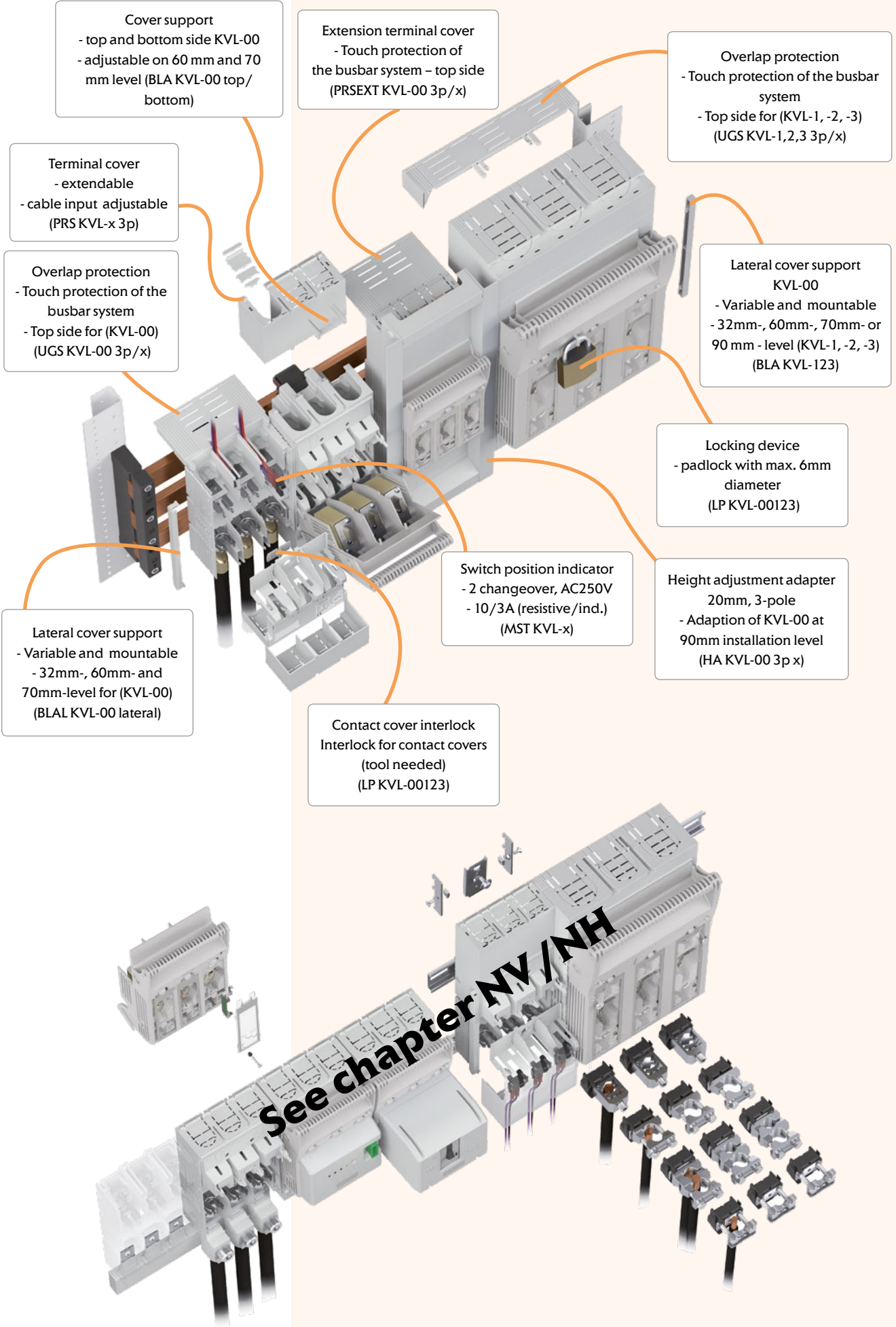


#### Retrofittable switch position indicator

- Dual monitoring in each unit
- Separate circuits function
- Wide range of applications due to high switching capacity 10/3A (resistive/ind.) AC250V



**New generation!**



Cover support  
 - top and bottom side KVL-00  
 - adjustable on 60 mm and 70 mm level (BLA KVL-00 top/bottom)

Extension terminal cover  
 - Touch protection of the busbar system – top side (PRSEXT KVL-00 3p/x)

Overlap protection  
 - Touch protection of the busbar system  
 - Top side for (KVL-1, -2, -3) (UGS KVL-1,2,3 3p/x)

Terminal cover  
 - extendable  
 - cable input adjustable (PRS KVL-x 3p)

Overlap protection  
 - Touch protection of the busbar system  
 - Top side for (KVL-00) (UGS KVL-00 3p/x)

Lateral cover support KVL-00  
 - Variable and mountable  
 - 32mm-, 60mm-, 70mm- or 90 mm - level (KVL-1, -2, -3) (BLA KVL-123)

Locking device  
 - padlock with max. 6mm diameter (LP KVL-00123)

Switch position indicator  
 - 2 changeover, AC250V  
 - 10/3A (resistive/ind.) (MST KVL-x)

Height adjustment adapter 20mm, 3-pole  
 - Adaption of KVL-00 at 90mm installation level (HA KVL-00 3p x)

Lateral cover support  
 - Variable and mountable  
 - 32mm-, 60mm- and 70mm-level for (KVL-00) (BLAL KVL-00 lateral)

Contact cover interlock  
 Interlock for contact covers (tool needed) (LP KVL-00123)

**See chapter NY/NH**

## 60 mm busbar system

### 3-pole, 60mm busbar, thickness 5 mm or 10 mm

Size	Code No.	Type	Weight [kg]	Packaging [pcs]
000	001690915	KVL-B-000 3p F50 Bottom	0,58	1
	001690916	KVL-B-000 3p F50 Top	0,58	1
00	001690910	KVL-B-00 3p M8-M8	0,9	1
	001690911	KVL-B-00 3p BC95-BC95	0,92	1
1	001690912	KVL-B-1 3p M10-M10	2,14	1
2	001690913	KVL-B-2 3p M10-M10	3,53	1
3	001690914	KVL-B-3 3p M10-M10	4,13	1

### 3-pole, 60mm busbar, Integrated Feeding Terminal

Size	Code No.	Type	Feeding side - Line - I1	Load side I2	I1	I2	Weight [kg]	Packaging [pcs]
00	001690920	KVL-B/FT-00 3p M8-M8	top/bottom	top/bottom	400	160	1,05	1
1	001690921	KVL-B/FT-1 3p M10-M10 TOP	bottom	top	500	250	2,39	1
	001690922	KVL-B/FT-1 3p M10-M10 BOTTOM	top	bottom			2,39	1
2	001690923	KVL-B/FT-2 3p M10-M10 TOP	bottom	top	800	400	3,9	1
	001690924	KVL-B/FT-2 3p M10-M10 BOTTOM	top	bottom			3,9	1
3	001690925	KVL-B/FT-3 3p M10-M10 TOP	bottom	top	1000	630	4,45	1
	001690926	KVL-B/FT-3 3p M10-M10 BOTTOM	top	bottom			4,45	1

### 1-pole busbar

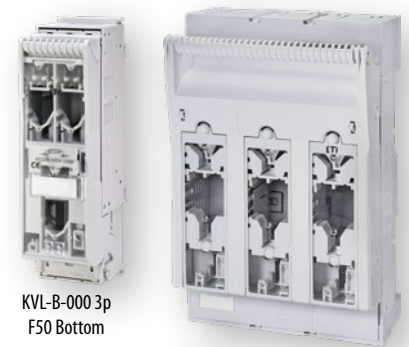
Size	Code No.	Type	Fixation	Weight [kg]	Packaging [pcs]
00	001690930	KVL-B/SF-00 1p M8-M8	screw fixation	0,35	2
	001690931	KVL-B/CF-00 1p M8-M8	clamp fixation	0,39	2
1	001690932	KVL-B/SF-1 1p M10-M10	screw fixation	0,98	1
2-3	001690933	KVL-B/SF-3 1p M10-M10	screw fixation	1,59	1

DO NOT USE WITH 3-pole 60 mm busbar system !!!

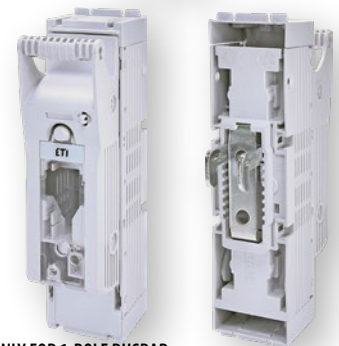
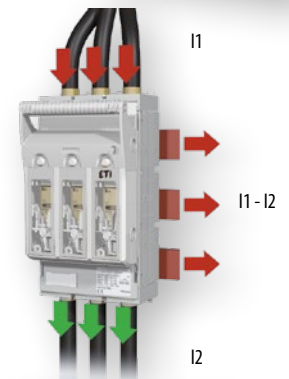
### Accessories for KVL busbar 60 mm

Type	Code No.	Description	Packaging min order [pcs]
HA KVL-00 3p T/B 340-370	001690980	Height adjusting adapter, 70 to 90mm, 3-pole, System size 340-370mm, top + bottom, size 00	1
HA KVL-00 3p T/B 300	001690981	Height adjusting adapter, 70 to 90mm, 3-pole, System size 300mm, top + bottom, size 00	1
HA KVL-00 3p L/R 340-370	001690982	Height adjusting adapter, 70 to 90mm, 3-pole, System size 340-370mm, right + left, size 00	1
HA KVL-00 3p L/R 300	001690983	Height adjusting adapter, 70 to 90mm, 3-pole, System size 300mm, right + left, size 00	1
PRS KVL-000 3p TOP	001691071	Terminal cover for top side	2
PRS KVL-000 3p BOTTOM	001691072	Terminal cover for bottom side	2
PRSEXT KVL-00 3p/34-39	001690984	Terminal cover extension, 3-pole, h1 = 39 or 34mm, size 00, *	2
PRSEXT KVL-00 3p/32	001690985	Terminal cover extension, 3-pole, h1 = 32mm, size 00, *	2
UGS KVL-000 3p/34-39	001691073	Overlap protector for busbar systems, 39 or 34mm,	10
UGS KVL-00 3p/34-39	001690986	Overlap protector for busbar systems, h1 = 39 or 34mm, for terminal F, S00, P00, R95, size 00	2
UGS KVL-00 3p/32	001690987	Overlap protector for busbar systems, h1 = 32mm, for terminal F, S00, P00, R95, size 00	2
UGS KVL-00 3p/R95T/34-39	001690988	Overlap protector for busbar systems, h1 = 39 or 34mm, for terminal R95T, size 00	2
UGS KVL-00 3p/R95T/32	001690989	Overlap protector for busbar systems, h1 = 32mm, for terminal R95T, size 00	2
UGS KVL-1 3p/34-39	001690990	Overlap protector for busbar systems, h1 = 39 or 34mm, size 1	2
UGS KVL-1 3p/32	001690991	Overlap protector for busbar systems, h1 = 32mm, size 1	2
UGS KVL-2 3p/39-34	001690992	Overlap protector for busbar systems, h1 = 39 or 34mm, size 2	2
UGS KVL-2 3p/32	001690993	Overlap protector for busbar systems, h1 = 32mm, size 2	2
UGS KVL-3 3p/39-34	001690994	Overlap protector for busbar systems, h1 = 39 or 34mm, size 3	2
UGS KVL-3 3p/32	001690995	Overlap protector for busbar systems, h1 = 32mm, size 3	2
BLAL KVL-000 lateral	001691074	Cover support	10
BLA KVL-00 top/bottom	001690961	Cover support, top or bottom side, level 60mm, 70mm, size 00	10
BLAL KVL-00 lateral	001690962	Cover support, lateral, level 32mm, 60mm, 70mm, size 00	10
BLA KVL-123	001690963	Cover support, top or bottom side, lateral, level 32mm, 60mm, 70mm, size 1, 2, 3	10

\* h1 = Distance top edge busbar to base plate



KVL-B-000 3p F50 Bottom



!!! ONLY FOR 1-POLE BUSBAR



PRS\_KVL-000\_top-bottom

UGS KVL-000 3p/34-39



BLAL\_KVL-000 lateral



BLA\_KVL-00\_top-bottom



BLAL\_KVL



HA KVL-00 3p T/B 300



PRS KVL-00 1p



PRS KVL-00 1p S



SP KVL... P2



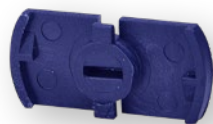
SP KVL-1 V



MST KVL-000 3p



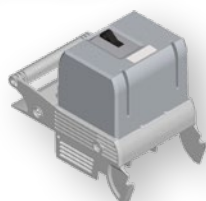
CK KVL-00 2p/4p



IC KVL-00123



LP KVL-00123



MPF MU



EF MU



PRS KVL-00 3p L



PRSEXT KVL-00 3p/34-39



UGS KVL-(1 or 2 or 3) 3p/x



UGS KVL-00 3p/34-39

Accessories for KVL

Type	Code No.	Description	Packaging min order [pcs]
SP KVL00	001692701	Clip terminal, 1,5 – 70 mm <sup>2</sup> Cu	3
SP KVL1	001692702	Clip terminal, 25– 150 mm <sup>2</sup> Cu	3
SP KVL2	001692703	Clip terminal, 25– 240 mm <sup>2</sup> Cu	3
SP KVL3	001692704	Clip terminal, 11x21 mm <sup>2</sup> Cu	3
SP KVL00 P1	001692760	Prism clamp, 10 – 70 mm <sup>2</sup> Al/Cu	3
SP KVL1 P1	001692761	Prism clamp, 70 – 150 mm <sup>2</sup> Al/Cu	3
SP KVL2 P1	001692762	Prism clamp, 120 – 240 mm <sup>2</sup> Al/Cu	3
SP KVL3 P1	001692763	Prism clamp, 120 – 300 mm <sup>2</sup> Al/Cu	3
SP KVL1 P2	001692764	Prism clamp for 2-conductors connection, 2x70 – 95 mm <sup>2</sup> Al/Cu	3
SP KVL2 P2	001692765	Prism clamp for 2-conductors connection, 2x120 – 150 mm <sup>2</sup> Al/Cu	3
SP KVL3 P2	001692766	Prism clamp for 2-conductors connection, 2x120 – 240 mm <sup>2</sup> Al/Cu	3
SP HVL 4a D2	001692767	Direct terminal clamp for 2-conductors connection, 2x120– 300mm <sup>2</sup> Al/Cu	1
SP HVL 4a D3	001692768	Direct terminal clamp for 3-conductors connection, 3x95 – 150 mm <sup>2</sup> Al/Cu	1
SP HVL 4a D4	001692769	Direct terminal clamp for 4-conductors connection, 4x95 – 150 mm <sup>2</sup> Al/Cu	1
SP KVL-1 V	001690940	Frame clamp, 35-150mm <sup>2</sup> Al/Cu	3
SP KVL-23 V	001690941	Frame clamp, 95-300mm <sup>2</sup> Al/Cu	3
MTB KVL00 2x25/1x16/M8	001690978	Terminal block with multiple wire connections	3
MTB KVL00 4x10/M8	001690979	Terminal block with multiple wire connections	3
MST KVL-000 3p	001691070	Switch position indicator	1
MST KVL-00 1p	001690947	Switch position indicator, 1-pole, size 00, **	1
MST KVL-00 3p	001690948	Switch position indicator, 3-pole, size 00, **	1
MST KVL-123 1p/2p/3p	001690949	Switch position indicator, 1/2/3 -pole, size 1, 2, 3, **	1
MST 4a 1p+3p	001692714	Switch position indicator + mechanical fuse monitor, size 4a, 1p/3p	1
MF M KVL-00 1p/2p/3p	001690950	Mechanical fuse monitor, size 00, **	3
MF M KVL-123 1p/2p/3p	001690951	Mechanical fuse monitor, size 1, 2, 3, **, ***	3
PRS KVL-00 3p L	001690952	Terminal cover, 3-pole, variable to open, Length 66mm, size 00	2
PRS KVL-00 3p S	001690953	Terminal cover, 3-pole, variable to open, Length 36mm, size 00	2
PRS KVL-1 3p	001690954	Terminal cover, 3-pole, variable to open, Length 42mm, size 1	2
PRS KVL-2 3p	001690955	Terminal cover, 3-pole, variable to open, Length 42mm, size 2	2
PRS KVL-3 3p	001690956	Terminal cover, 3-pole, variable to open, Length 42mm, size 3	2
PRS KVL-00 1p L	001690957	Terminal cover, 1-pole, variable to open, Length 66mm, size 00	2
PRS KVL-00 1p S	001690958	Terminal cover, 1-pole, variable to open, Length 36mm, size 00	2
PRS KVL-1 1p	001690959	Terminal cover, 1-pole, variable to open, Length 42mm, size 1	2
PRS KVL-3 1p	001690960	Terminal cover, 1-pole, variable to open, Length 42mm, size 3	2
EF MU KVL-00 3p	001690966	Electronic fuse monitoring unit, 3-pole, size 00, ****	1
EF MU KVL-1 3p	001690967	Electronic fuse monitoring unit, 3-pole, size 1, ****	1
EF MU KVL-2 3p	001690968	Electronic fuse monitoring unit, 3-pole, size 2, ****	1
EF MU KVL-3 3p	001690969	Electronic fuse monitoring unit, 3-pole, size 3, ****	1
MPF MU KVL-00 3p	001690974	Elektromechanical fuse monitoring unit (AM), 3-pole, size 00, ****	1
MPF MU KVL-1 3p	001690975	Elektromechanical fuse monitoring unit (AM), 3-pole, size 1, ****	1
MPF MU KVL-2 3p	001690976	Elektromechanical fuse monitoring unit (AM), 3-pole, size 2, ****	1
MPF MU KVL-3 3p	001690977	Elektromechanical fuse monitoring unit (AM), 3-pole, size 3, ****	1
LP KVL-00123	001690972	Interlock device, locking with padlock, diameter 6mm max., size 00, 1, 2, 3	10
IC KVL-00123	001690973	Contact cover interlock, only be operated by tool, size 00-3	10

\*\* 1 Changeover, AC250V, 10/3A (ohmic/ind.)

\*\*\* Only in combination with ETI fuse-links with striker-pin; not in combination with frame-clamp or 2-wire-prism clamp.

\*\*\*\* For monitoring of fuse-links with live gripping lugs



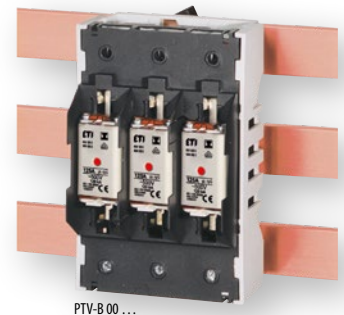
## 60 mm busbar system

### NH fuse bases for 60mm busbar

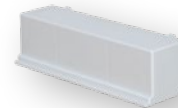
Type	Code No.	Description	Packaging [pcs]
PTV-B 00 3p M8	001696035	NH fuse-base size 00, 3-pole, 5-10mm busbars, fuse-link protection cover, connection top or bottom, M8 connection	1
PTV-B 00 3p F57	001696036	NH fuse-base size 00, 3-pole, 5-10mm busbars, fuse-link protection cover, connection top or bottom, F57 connection	1
PTV-B 1 3p M10 BOTTOM	001696037	NH fuse-base size 1, 3p, 5-10mm busbars, connection BOTTOM	1
PTV-B 1 3p M10 TOP	001696038	NH fuse-base size 1, 3p, 5-10mm busbars, connection TOP	1
PTV-B 2 3p M10 BOTTOM	001696039	NH fuse-base size 2, 3p, 5-10mm busbars, connection BOTTOM	1
PTV-B 2 3p M10 TOP	001696040	NH fuse-base size 2, 3p, 5-10mm busbars, connection TOP	1
PRS 00 B TOP 195	001696123	Protective cover, 3-pole, size 00, TOP, short (bottom to top length 195mm)	1
PRS 00 B BOTTOM 195	001696124	Protective cover, 3-pole, size 00, BOTTOM, short (bottom to top length 195mm)	1
PRS 00 B TOP 230	001696125	Protective cover, 3-pole, size 00, TOP, wide (bottom to top length 230mm)	1
PRS 00 B BOTTOM 230	001696126	Protective cover, 3-pole, size 00, BOTTOM, wide (bottom to top length 230mm)	1
PRS 1 B TOP	001696127	Protective cover, 3-pole, size 1, TOP	1
PRS 1 B BOTTOM	001696128	Protective cover, 3-pole, size 1, BOTTOM	1
PRS 2 B TOP	001696129	Protective cover, 3-pole, size 2, TOP	1
PRS 2 B BOTTOM	001696130	Protective cover, 3-pole, size 2, BOTTOM	1
H-PTV-B 00	001696131	Protection cover for fuse in fuse base PTV-B 00	3

### Device adapters for 60 mm busbar

Type	Code No.	Description	Packaging [pcs]
DA-60/25/45/1	001696080	Device adapter with 1 mounting rail, 3-pole, 45mm width, 25A	1
DA-60/32/54/1	001696081	Device adapter with 1 mounting rail, 3-pole, 54mm width, 32A	1
DA-60/32/63/1	001696082	Device adapter with 1 mounting rail, 3-pole, 63mm width, 32A	1
DA-60/32/72/1	001696083	Device adapter with 1 mounting rail, 3-pole, 72mm width, 32A	1
DA-60/63/54/1	001696084	Device adapter with 1 mounting rail, 3-pole, 54mm width, 63A	1
DA-60/63/63/1	001696085	Device adapter with 1 mounting rail, 3-pole, 63mm width, 63A	1
DA-60/63/72/1	001696086	Device adapter with 1 mounting rail, 3-pole, 72mm width, 63A	1
DA-60/25/45/2	001696087	Device adapter with 2 mounting rails, 3-pole, 45mm width, 25A	1
DA-60/32/108/2	001696088	Device adapter with 2 mounting rails, 3-pole, 108mm width, 32A	1
DA-60/32/54/2	001696089	Device adapter with 2 mounting rails, 3-pole, 54mm width, 32A	1
DA-60/32/72/2	001696090	Device adapter with 2 mounting rails, 3-pole, 72mm width, 32A	1
DA-60/32/81/2	001696091	Device adapter with 2 mounting rails, 3-pole, 81mm width, 32A	1
DA-60/63/108/2	001696092	Device adapter with 2 mounting rails, 3-pole, 108mm width, 32A	1
DA-60/63/54/2	001696093	Device adapter with 2 mounting rails, 3-pole, 54mm width, 63A	1
DA-60/63/81/2	001696094	Device adapter with 2 mounting rails, 3-pole, 81mm width, 63A	1
MR-DA/45/7,5	001696098	Mounting rail for adapter 45mm width, 35mm rail	10
MR-DA/54/7,5	001696099	Mounting rail for adapter 54mm width, 35mm rail	10
MR-DA/63/7,5	001696100	Mounting rail for adapter 63mm width, 35mm rail	10
MR-DA/72/7,5	001696101	Mounting rail for adapter 72mm width, 35mm rail	10
MR-DA/81/7,5	001696102	Mounting rail for adapter 81mm width, 35mm rail	10
MR-DA/90/7,5	001696103	Mounting rail for adapter 90mm width, 35mm rail	10
CP-DA	001696104	Connecting piece	100
WC-DA	001696105	Width compensation (9mm)	10
AMR-DA/45	001696109	Adapter module 45mm width (segment to lengthen adapter)	1
AMR-DA/54	001696110	Adapter module 54mm width (segment to lengthen adapter)	1
HAS	001696111	Compensation piece for busbar thickness (to adapt busbar components to fit 10mm or 5mm busbar thickness)	100
DA-60/250/3/FE-5	001696162	Adapter for MCCB - ETIBREAK EB2 250 and EB2S 250	1
DA-60/250/4/FE-5	001696163	Adapter for MCCB - ETIBREAK EB2 250 and EB2S 250	1



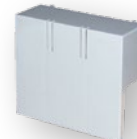
PTV-B 00 ...



PRS ... B 195



H-PTV-B 00



PRS ... B 230



DA-60 ... /2



DA-60 ... /1



MR-DA ... /7,5



CP-DA



WC-DA



MR-DA



AMR-DA



MCCB adapter



HAS



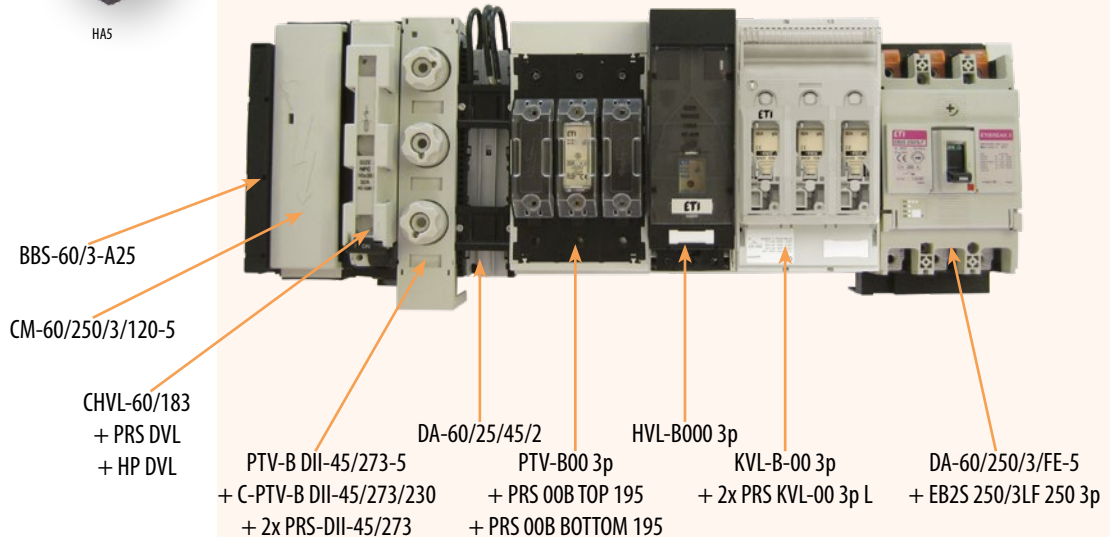
**Note:**

When ordering D-type fuse-bases and fuse-switch disconnectors, please also order fuse carriers and gauge pieces additionally. See D (see page 565) and D0 (see page 583) chapters of the catalogue.

D fuse-switch disconnector and fuse bases for 60mm busbar			
Type	Code No.	Description	Packaging [pcs]
DVL-60/183	001696050	Fuse-switch disconnector for fuses D02	1
CHVL-60/183	001696152	CH-type fuse-switch disconnector	1
PTV-B D02-27/183-5	001696051	D02-type-fuse-bases 3-pole for adapter sleeve, width 27mm	10
PTV-B DII-45/273-5	001696052	DII-type-fuse-bases 3-pole for adapter sleeve, width 45mm	1
PTV-B DIII-54/333-5	001696053	DIII-type-fuse-bases 3-pole for adapter sleeve, width 54mm	10
PTV-B DII-45/273S-5	001696054	DII type-fuse-bases 3-pole for fitting screw, width 45mm	10
PTV-B DIII-54/333S-5	001696055	DIII type-fuse-bases 3-pole for fitting screw, width 54mm	10
C-PTV-B D02-27/183/195	001696056	Protection cover width 27mm, height 195mm	10
C-PTV-B D02-36/183/195	001696057	Protection cover width 36mm, height 195mm	10
C-PTV-B DII-45/273/195	001696058	Protection cover width 45mm, height 195mm	10
C-PTV-B DIII-54/333/195	001696059	Protection cover width 54mm, height 195mm	10
C-PTV-B D02-27/183/230	001696060	Protection cover width 27mm, height 230mm	10
C-PTV-B D02-36/183/230	001696061	Protection cover width 36mm, height 230mm	10
C-PTV-B DII-45/273/230	001696062	Protection cover width 45mm, height 230mm	10
C-PTV-B DIII-54/333/230	001696063	Protection cover width 54mm, height 230mm	10
CL-PTV-B D/195	001696064	Side protection cover width 195 (for C-PTV-B ... /195)	1
CL-PTV-B D/230	001696065	Side protection cover width 230 (za C-PTV-B ... /230)	10
RPH-195	001696066	Protection cover	15
HP-DVL	001696067	Protection cover for DVL and CHVL, TOP/BOTTOM	2
RTP-D02-27/183	001696068	Reach-through protection, face top and bottom, 27mm width	20
RTP-D02-36/183	001696069	Reach-through protection, face top and bottom, 36mm width	20
RTP-DII-45/273	001696070	Reach-through protection, face top and bottom, 45mm width	10
RTP-DIII-54/333	001696071	Reach-through protection, face top and bottom, 54mm width	10
PRS-D02-27/183	001696072	Overreaching protection, face top and bottom, 27mm width	20
PRS-D02-36/183	001696073	Overreaching protection, face top and bottom, 36mm width	20
PRS-DII-45/273	001696074	Overreaching protection, face top and bottom, 45mm width	10
PRS-DIII-54/333	001696075	Overreaching protection, face top and bottom, 54mm width	10
RTP-RL/230	001696076	Reach-through protection lateral right and left	20
PRS-DVL	001696077	D-strips spacer module	10
HAS	001696111	Compensation piece for busbar thickness (to adapt busbar components to fit 10mm or 5mm busbar thickness)	100

\*HAS is compensation piece which is intent to use for adaptation for example fuse-bases or fuse-switch disconnector from 10mm busbar thickness to 5mm busbar thickness. Each phase pole needs one compensation piece.

\*\* more information available in technical part of the catalogue

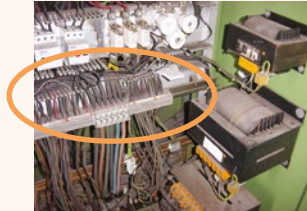


**Benefits using ETI busbar 60mm**

Poor visibility of connections without orderliness links.



Reduced number of connections (less power supply terminals)



Low integration of elements



Implementation with the busbar system provides several benefits

